

BRAKINA OUAGADOUGOU Burkina Faso

Located in Ouagadougou (Burkina Faso) the brewery BRAKINA (BGI group) makes 7 brands of different beers: CASTEL - BRAKINA - SOBBRA - FLAG - GUINNESS - MALTA - TUBORG.
The brewing has been modernised and automated.
The capacity of production has increased from 1680 to 2900 Hl/day.



ELECTROMECHANIQUE CONFIGURATION

A panel of 6 modules size 2000 x 800 for brewing, transfer and filtration

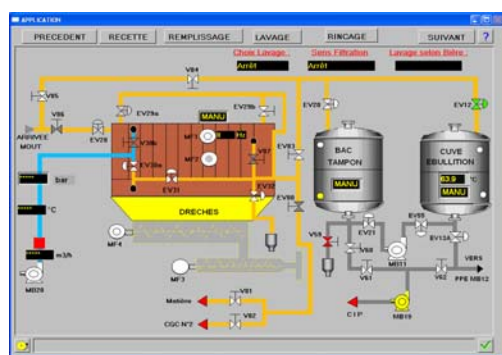
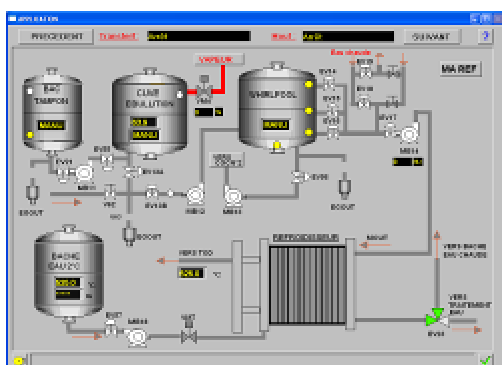
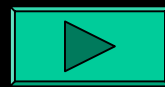
AUTOMATISM CONFIGURATION

TSX57 PREMIUM PLC and direct extension rack including:

- 320 digital input / output.
- 40 analog input / output, management of temperature with PT 100, management of speed controllers instructions, flows and volumes.

Monitoring PC fitted with MONITOR PRO in Ethernet network.
Running of the system in sequential automatic or manual mode.
Management of beer receipts.
Management of speed and temperature set points.
Functional and factual follow up

←supervision views



TIERI BURKINA 09 BP 611 Ouagadougou
(Burkina Faso) **(Certified ISO 9001)**
Doc réf. N° 01-2006 – BRAKINA www.tieri.com