

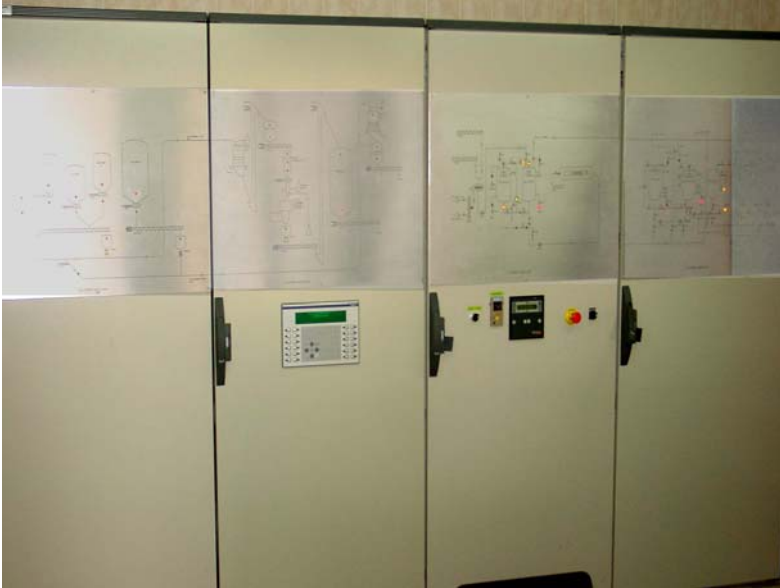
SOLIBRA BREWERY, ABIDJAN

Located in Abidjan (Côte d' Ivoire) the beer-making SOLIBRA (BGI group) makes 6 brands of different beers:

BOCK -FLAG -CASTEL-TUBORG-
GUINNESS- MALTA.

It capacity of brewing is
5000 hl /day.

← Partial view of boxes.



ELECTROMECHANIC CONFIGURATION

Box of 3 modules with 2000x800 for crushing and pounding.

Box of 4 modules with 2000x800 brewing and transfer with synoptic for functioning.

40 engines starts with 8 under variators 16 under electronic starters

AUTOMATISM CONFIGURATION

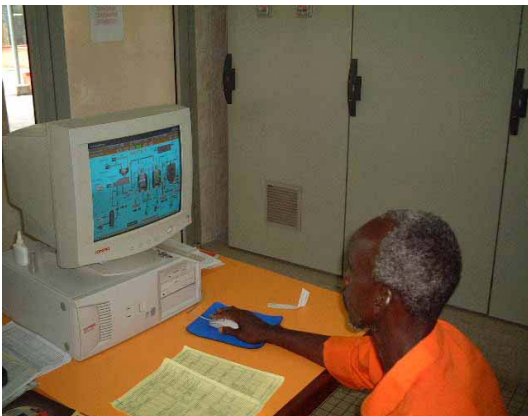
- TSX 57 PREMIUM automation and extension rack 350 all-or-nothing input output.
- 40 analog input-output , management of temperature with PT 100, management of speed variator instructions, of flows and volumes
- MAGELLIS XBTF display keyboard ,control of manual functioning of the system by RS485 connection.
- CCX17 display keyboard , management of tanks cleaning and washing with UNITELWAY connection

← View of the automated module

MONITOR PRO PC for supervision under FIP network

Management of receipts management of temperature et speed instructions control, functional and factual follow up.

← Supervision post



SA TIERI 18 BP 2179 ABIDJAN RCI (certified ISO 9001)
doc. réf. N° 03-2001- SOLIBRA V.E. www.tieri.com